

# Notification of Healthcare-associated influenza in a French region : what is the trend since 2012?

P38

F. Stordeur, L. Hoisnard, E. Seringe, P. Astagneau  
North France healthcare Infection Control Centre (CClin Paris-Nord), Paris, France



## Background

Several networks in France are in charge of the surveillance of community acquired influenza. Nevertheless, hospital's data also exist. As healthcare-associated infections (HCAI), cases contracted in hospital have to be notified since 2001. The aim of the study was to analyze and to compare HCAI notifications to community data, during the five flu-seasons from 2012 to 2017, in the Ile-de-France region.

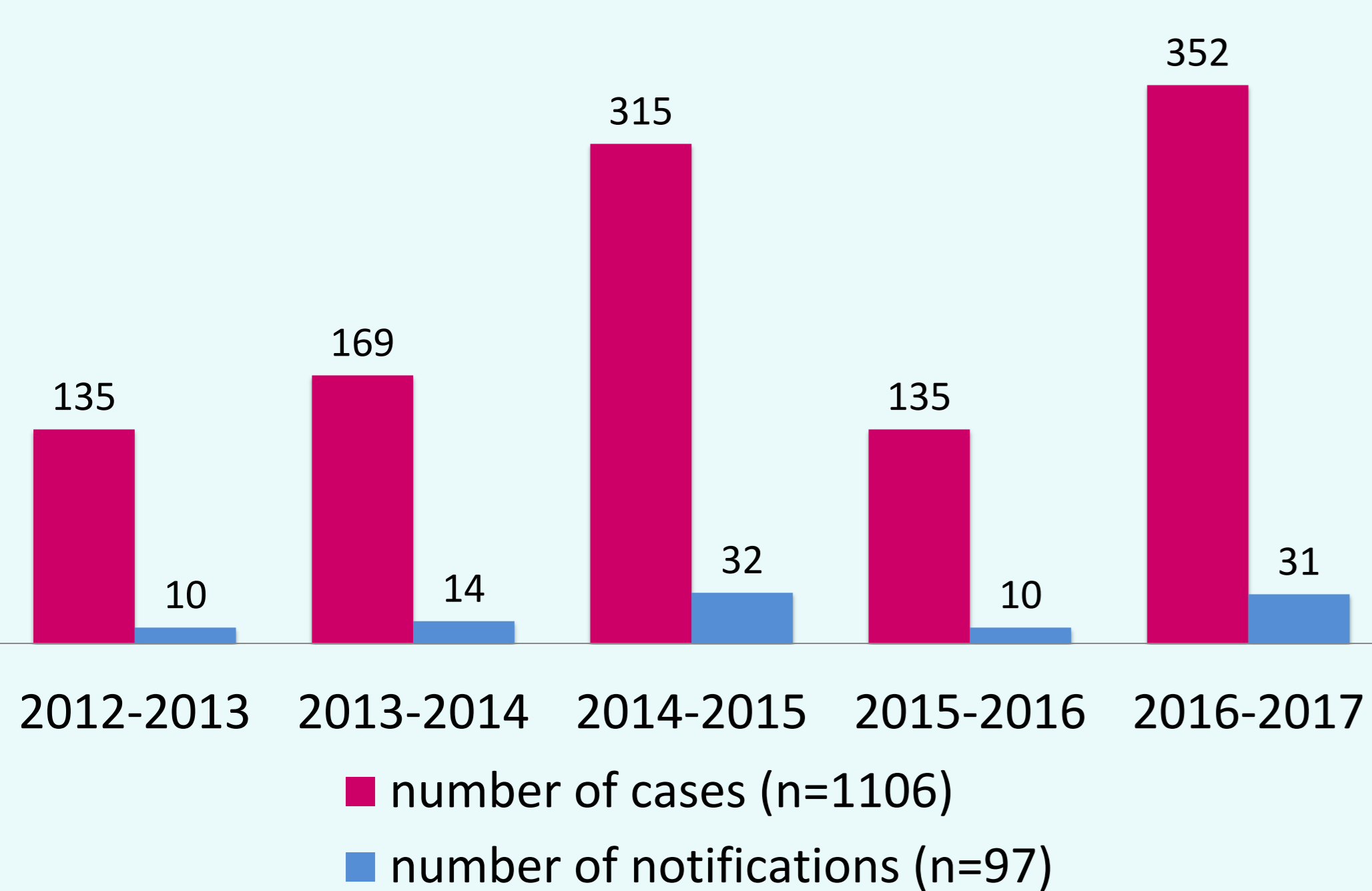
## Methods

Data were collected from the electronic tool (eSIN) used since 2012 to notify HCAI. Notifications were included if the first case of HCAI had occurred between the 1st october and the 31st march. As the involved microorganism was not systematically known, selection criteria were multiple: the anatomical site ("top"- "bottom"- "unknown"- "others" respiratory infection), the microorganism ("influenza" and "others" virus), the linked nature ("influenza outbreak" and "influenza-like illness"), and "influenza" as free text. In addition, community data collected from a general physician network (French Sentinelles network) were analyzed.

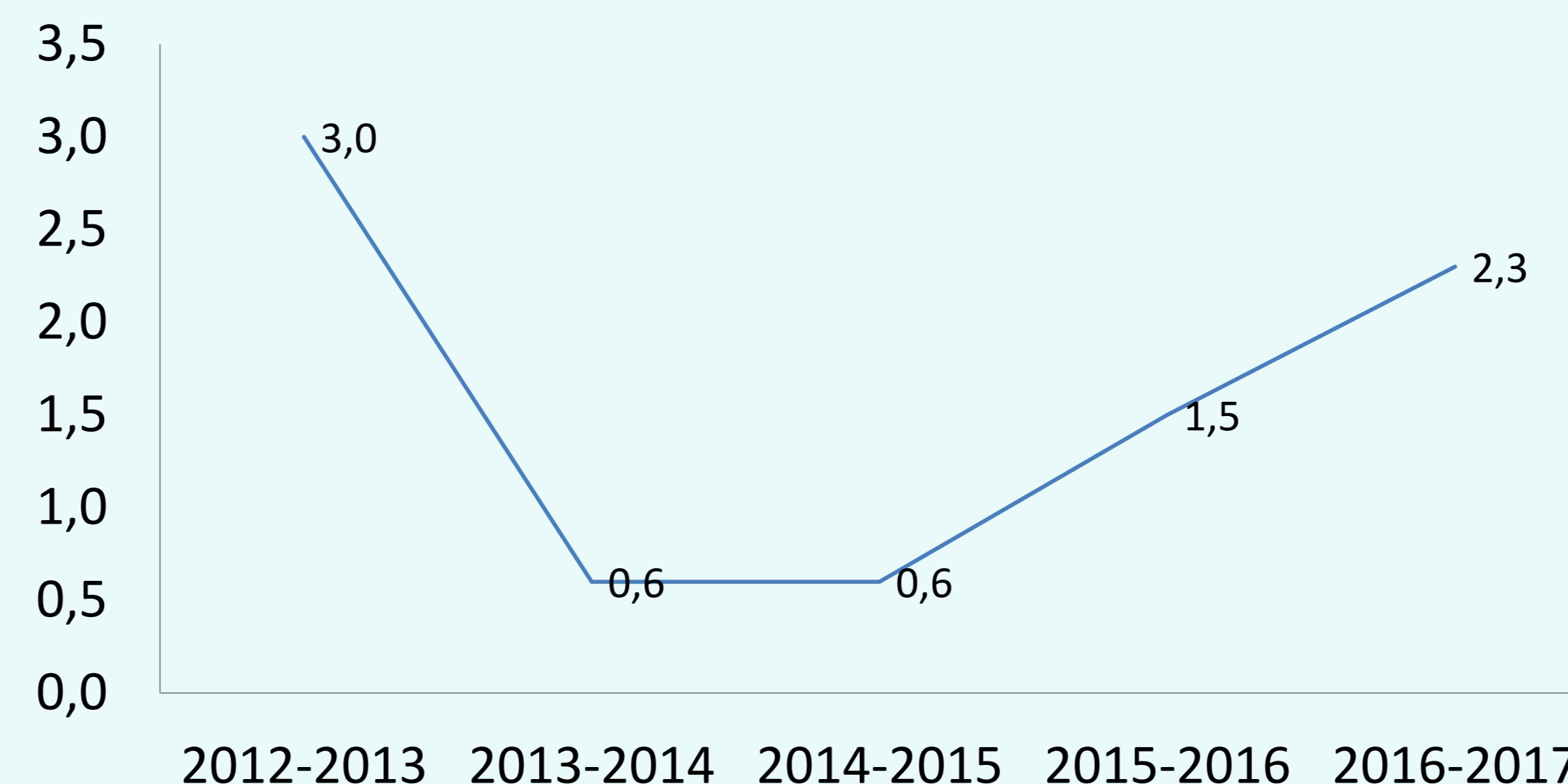
## Results

### Influenza HCAI notifications

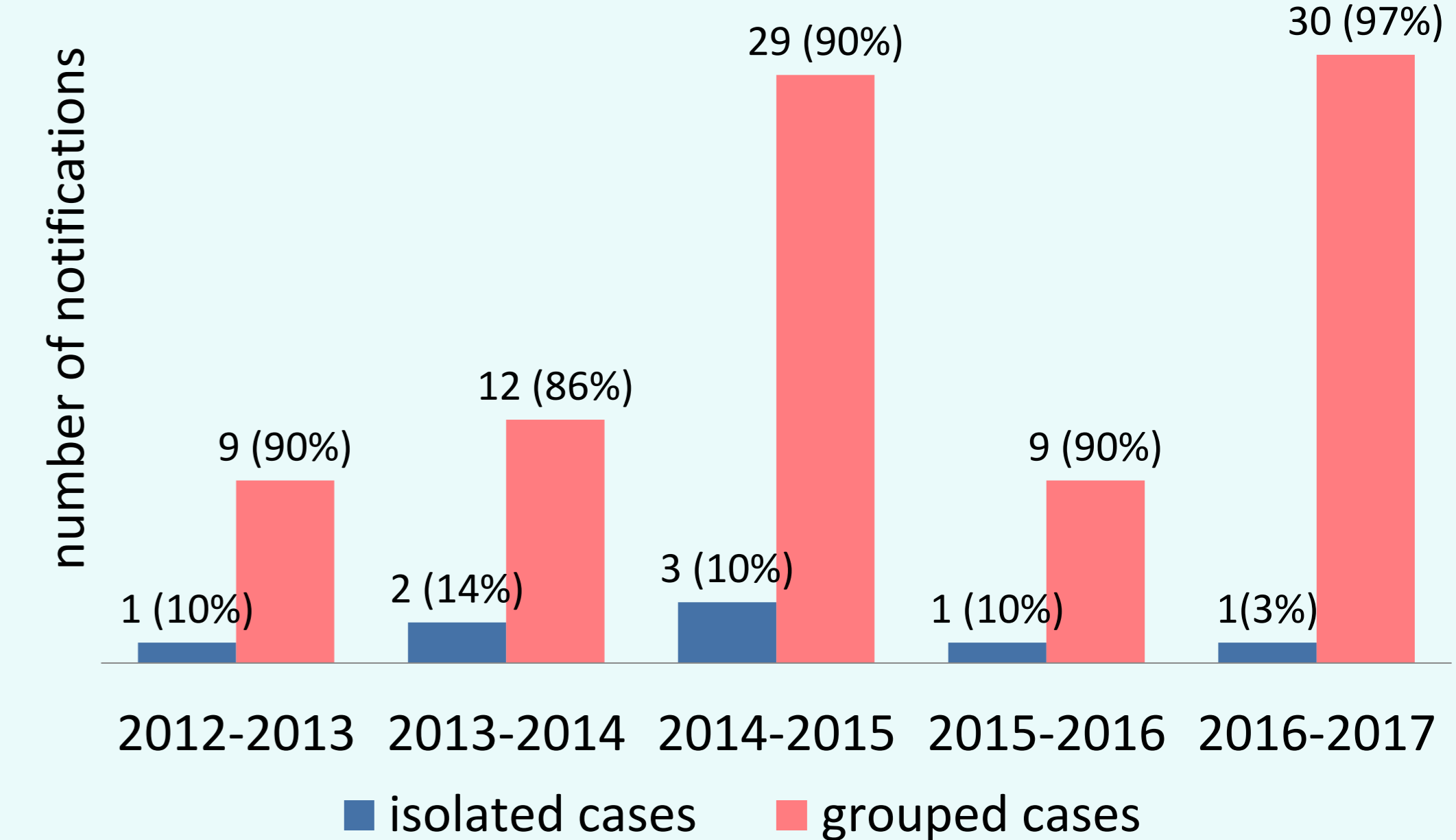
Repartition of healthcare-associated influenza cases for the five seasons



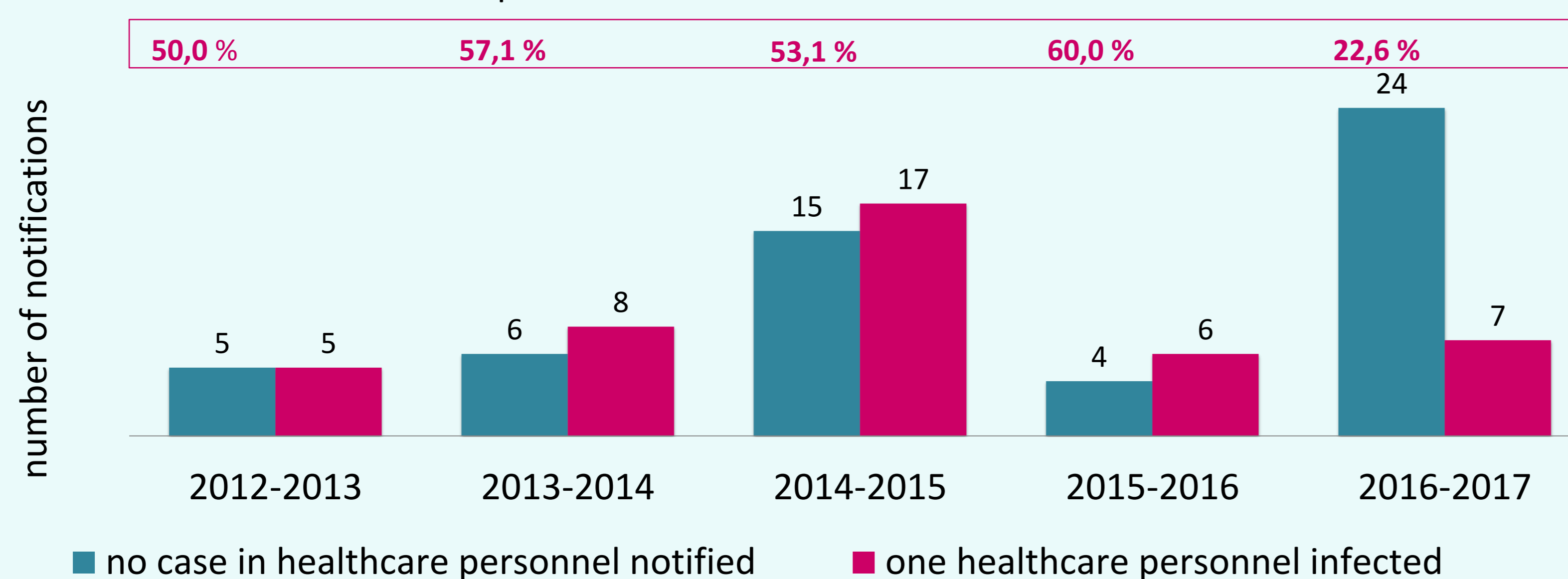
Case-fatality rate of healthcare-associated influenza cases notified (%)



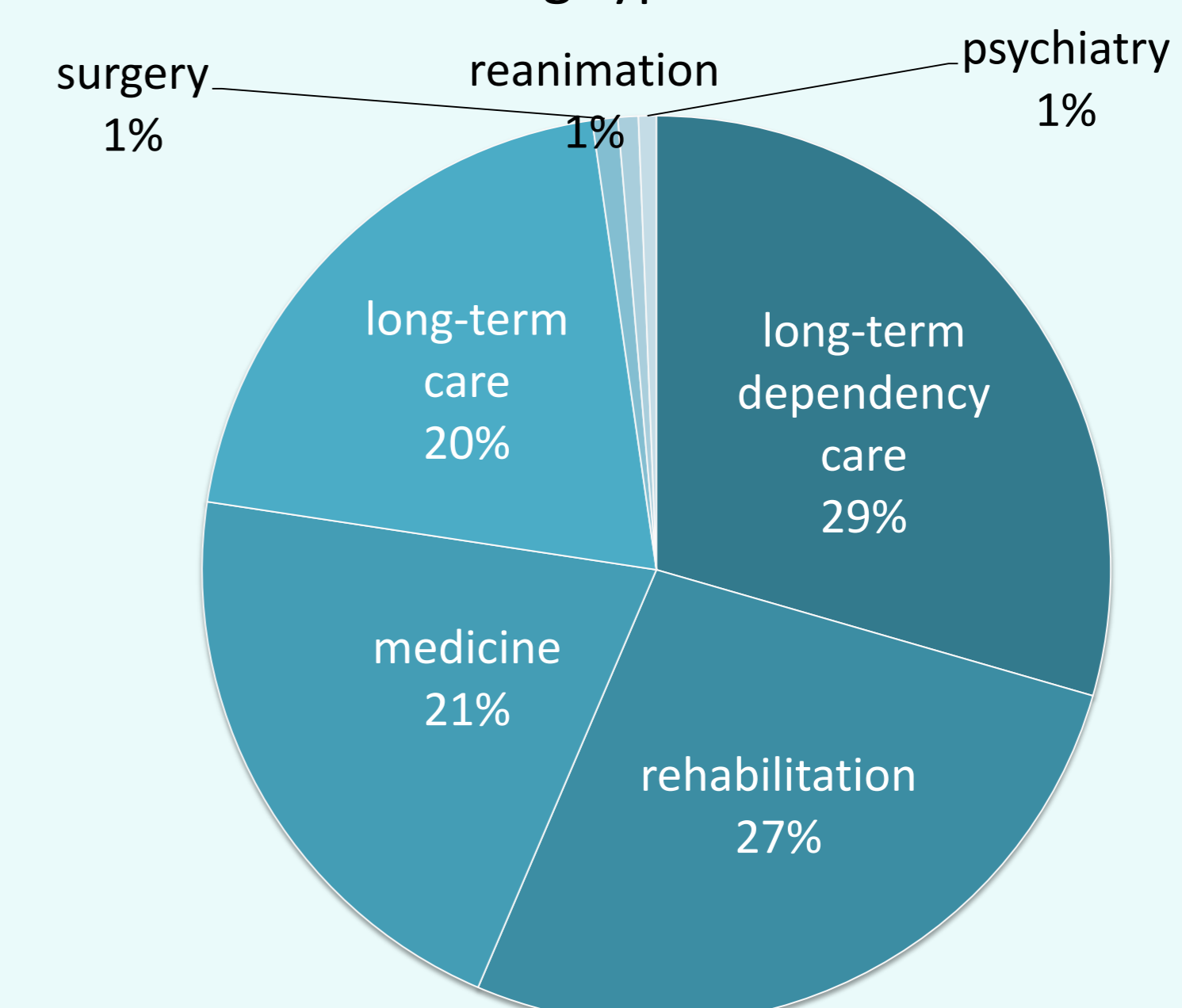
Repartition of notifications including grouped cases



Proportion of infected healthcare staff

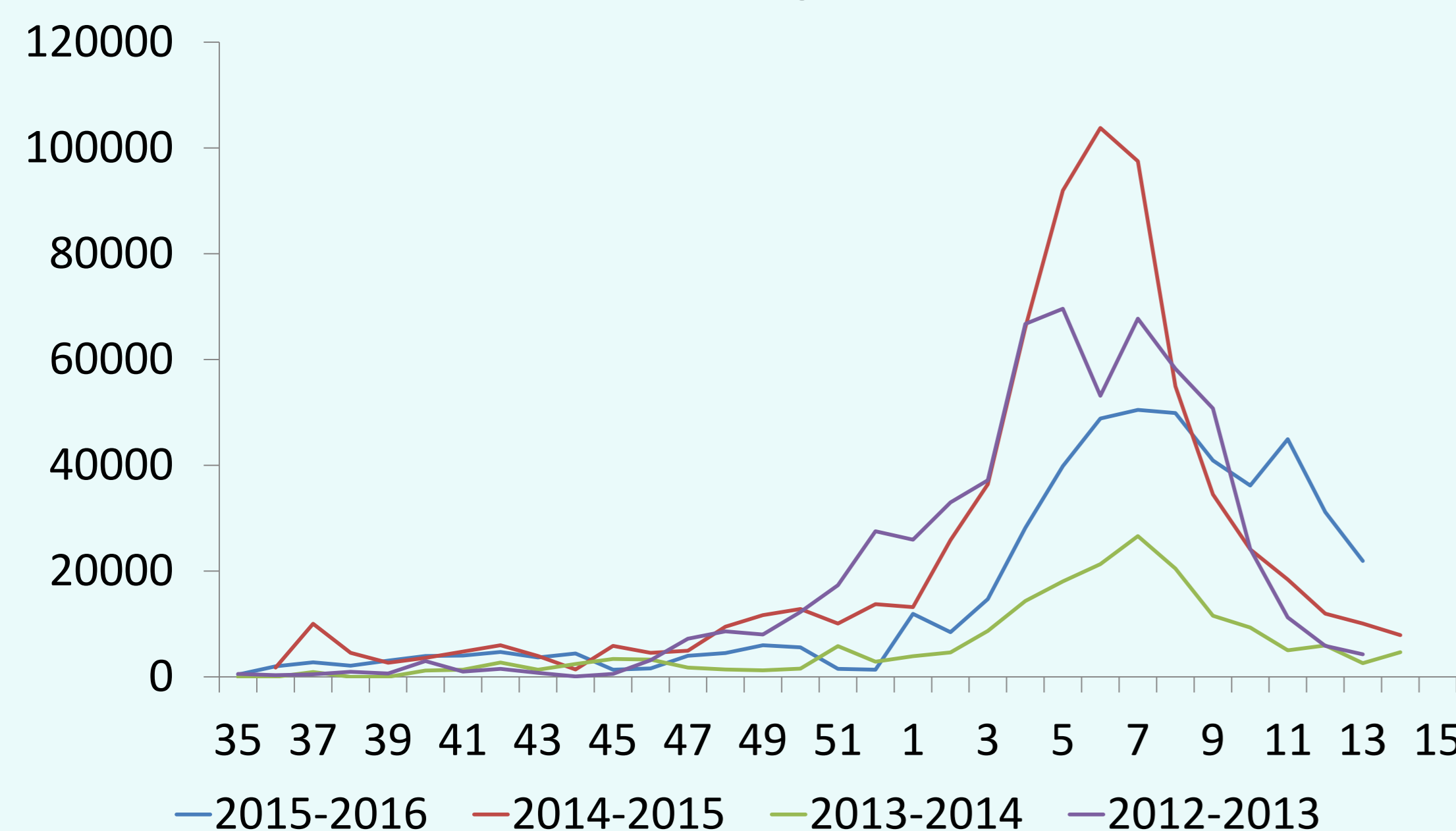


Repartition of totally five seasons cases according type of unit

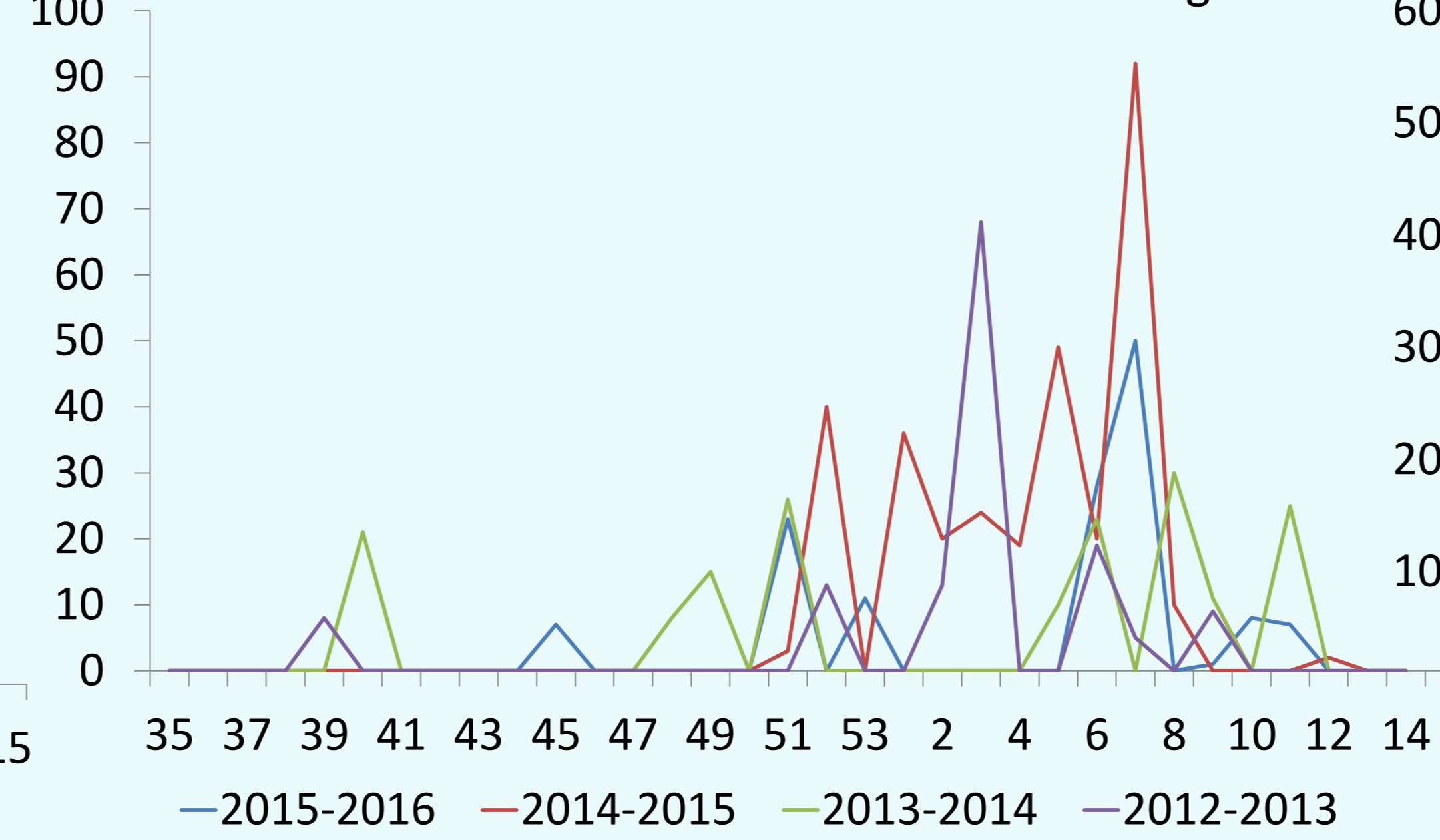


### Communautory and HCAI data

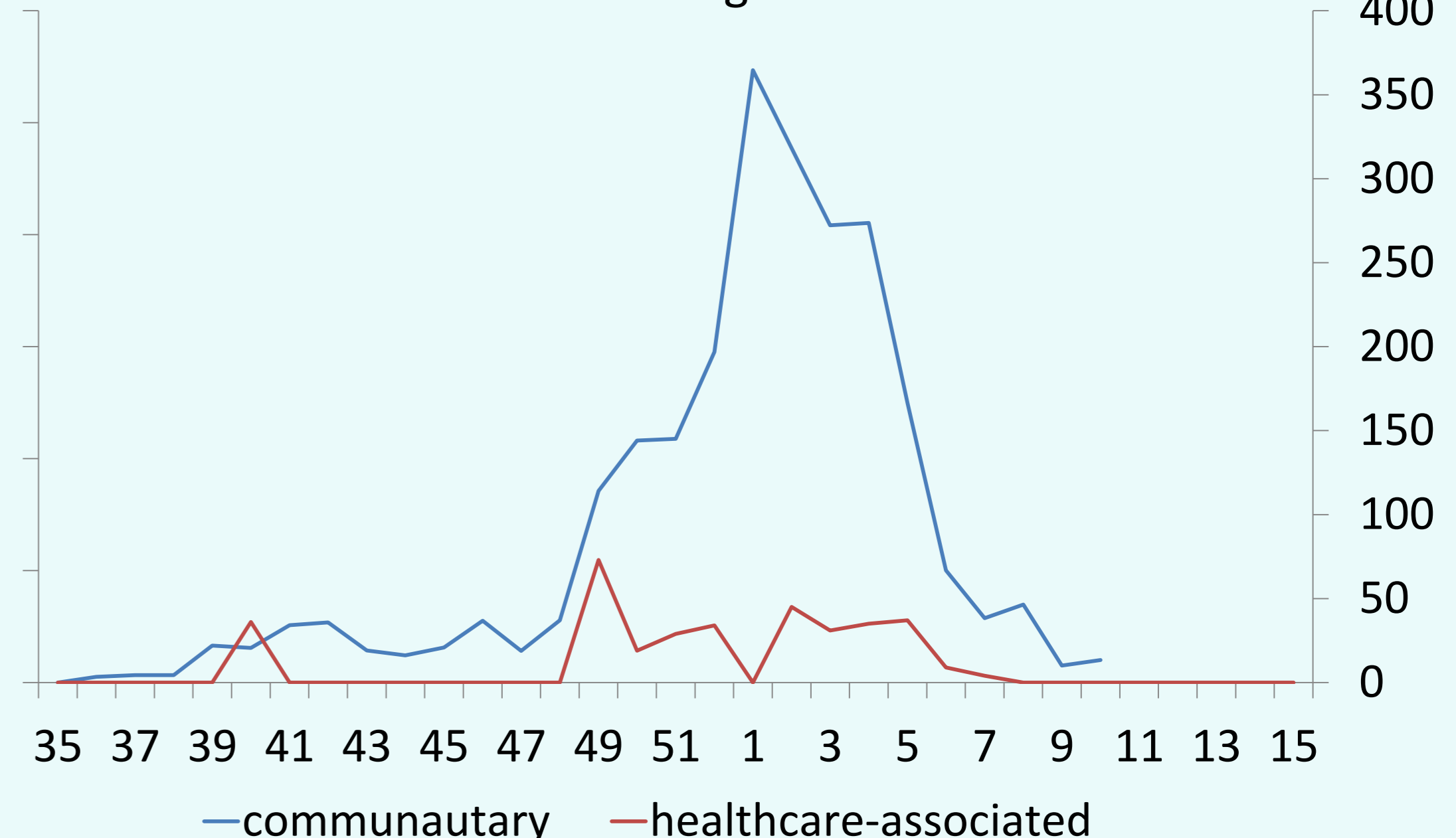
Estimated number of communautory influenza cases for the Ile de France region, from 2012 to 2016



Number of cases of healthcare-associated influenza notified on eSIN for the Ile de France region



Number of cases for the 2016-2017 season for the Ile de France region



## Conclusion

The outbreak of healthcare-associated influenza is strongly linked to the community transmission. Except for the 2016-2017 season, the healthcare outbreak peak occurs simultaneously with influenza community transmission. The strengthening of standard precautions and the vaccination of healthcare professionals and high-risk patients are particularly essential during the epidemic period.